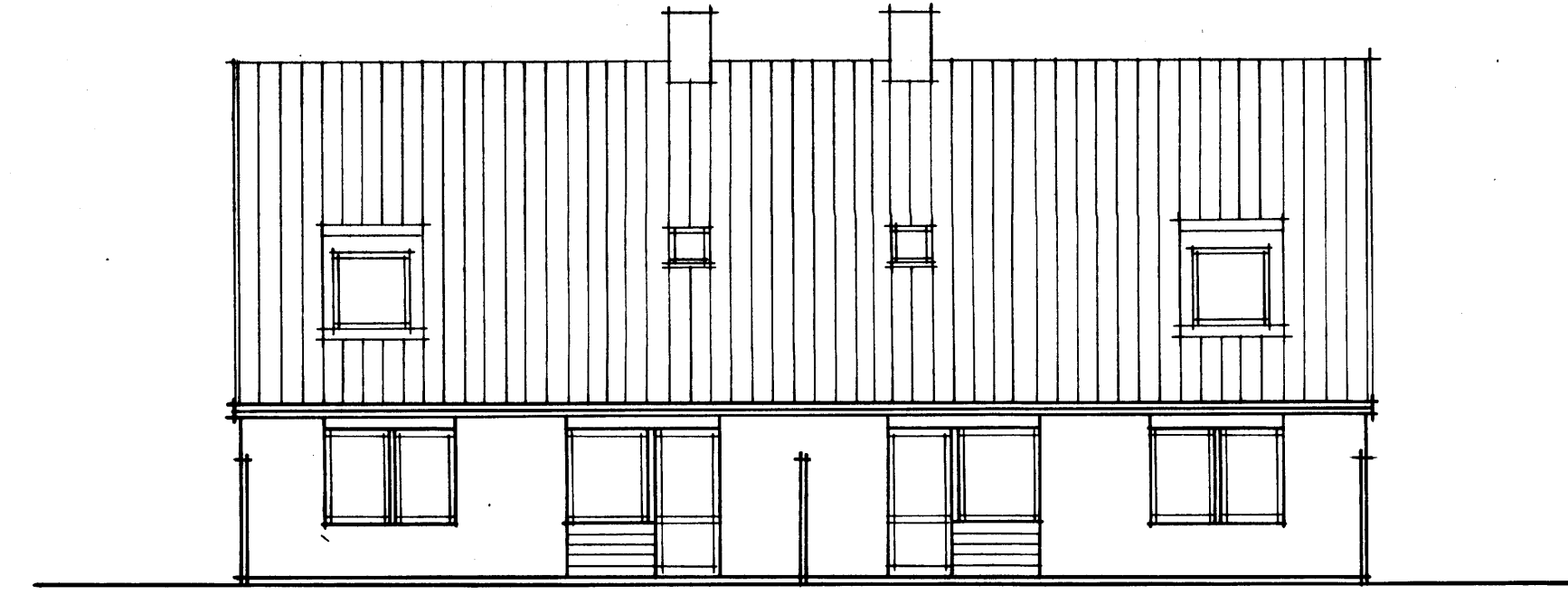
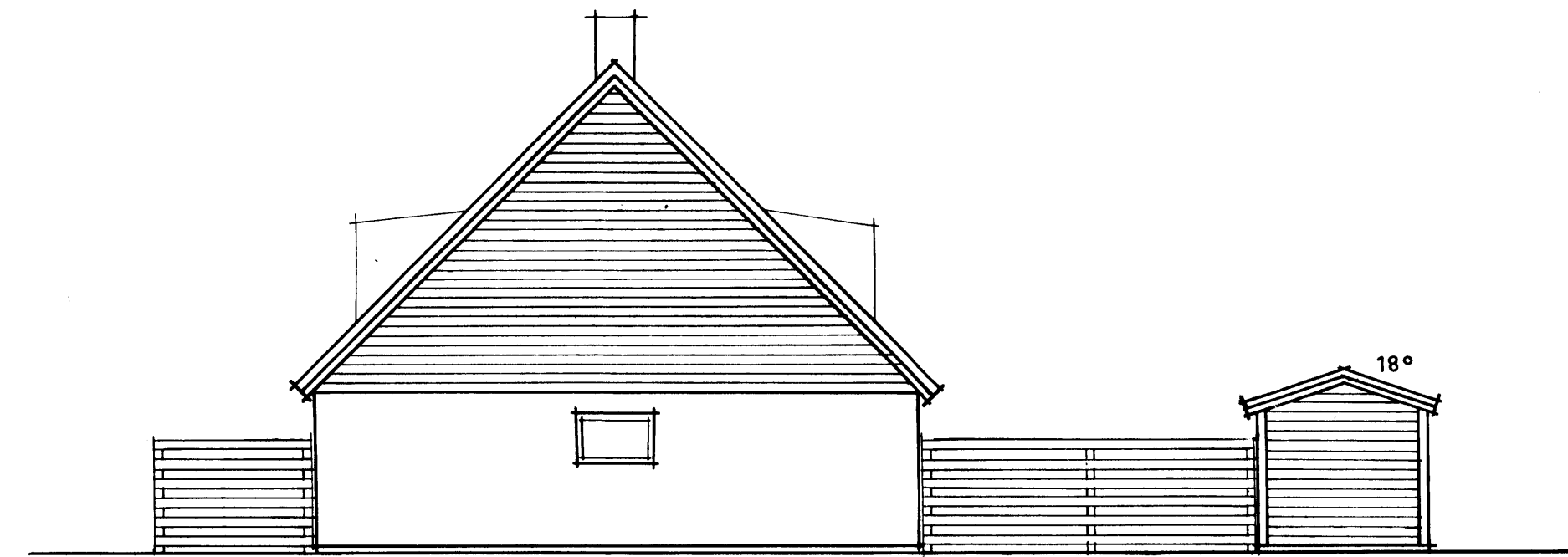
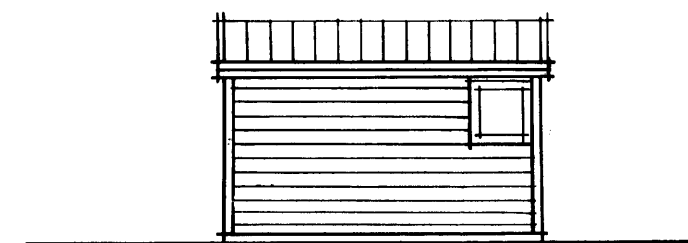


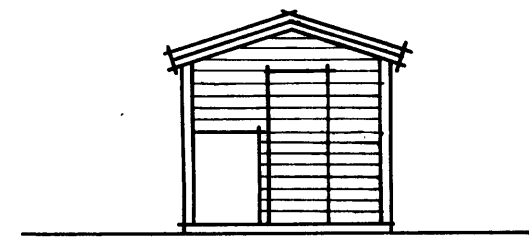
ENTRÉFASAD



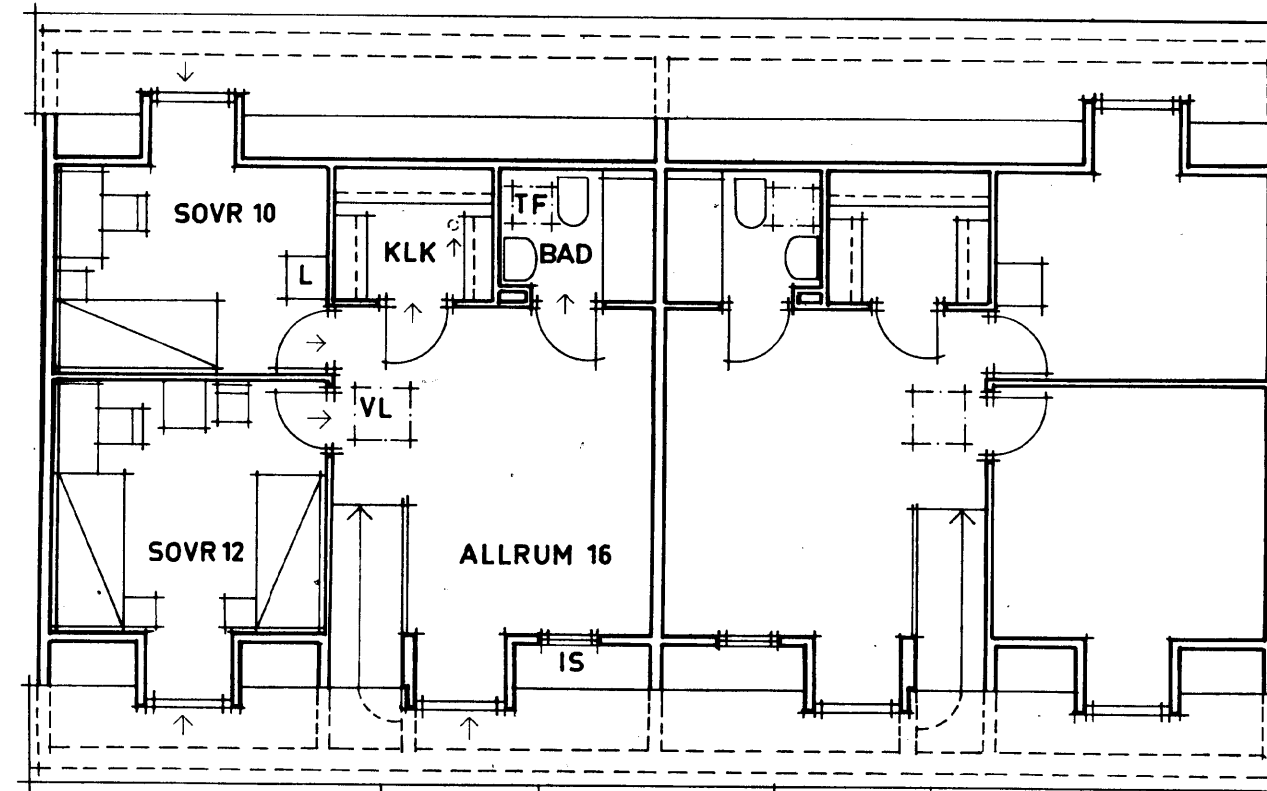
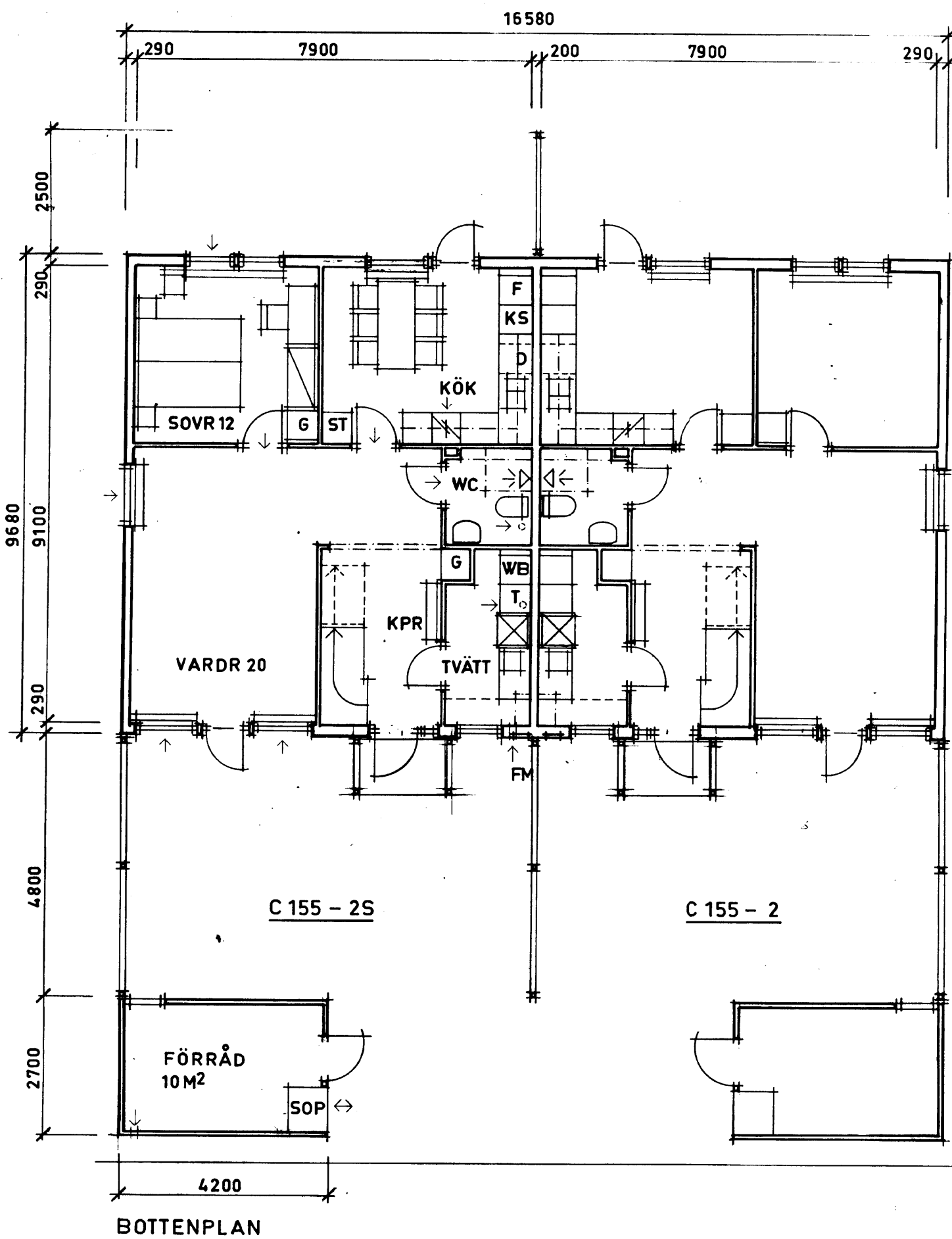
TRÄDGÅRDSFASAD



GAVELFASAD

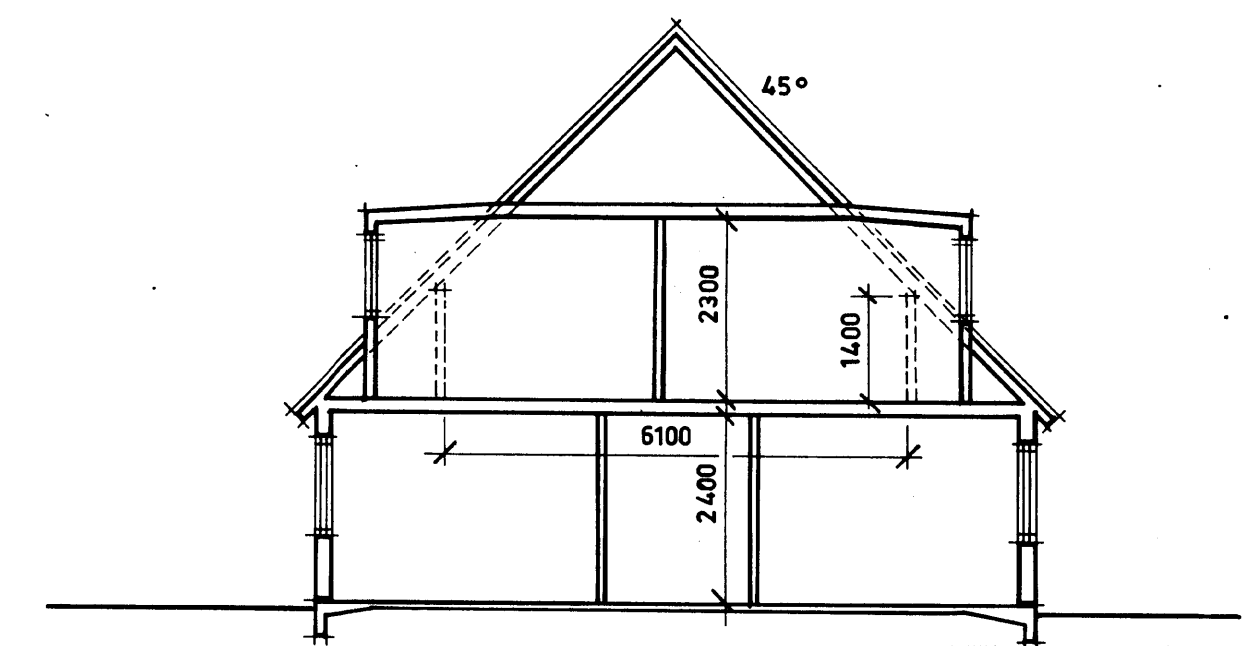


Ösm 77-463



VINDSPLAN

- IS = INSP. LUCKA
- VL = VINDSLUCKA
- TF = TAKFÖNSTER
- D = PLATS FÖR DISKMASKIN
- FM = FASADMÄTARSKÅP



SEKTION

C155-202S
3 1/2 RK + ALLRUM, LY = 120 M²

| | | | | | |
|--|-------------------------------|---------------------------|---|-----------------------|-------------------------------|
| SVENSKA RIKSBYGGEN PROJEKTERINGSKONTORET I STOCKHOLM ARKITEKTSEKTIONEN SALTVÄTARGATAN 8 TEL 08/14 10 80 BOX 19015 104 32 STOCKHOLM 19 | | | ÖREBRO KOMMUN HOVSTA (DELPLAN 3) ÖREBROHUS 18 KV. DVYCKERTEN PLANER, FASADER OCH SEKTION SKALA 1:100 | | |
| RITAD AV Z.K. | KONSTRUERAD AV Z.K. | GRANSAD AV Z.K. | ARBETSNUMMER 538710 | ETAPP A2:20 | RITNINGNUMMER A2:20 |
| STOCKHOLM 1977-06-15 | | | REV. | | |